



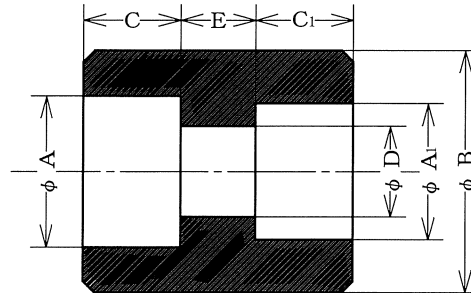
さし込み溶接形レジュューサー

SOCKET-WELDING REDUCERS

SWRC

(CON. REDUCERS)

JIS B2316



SW RC

UNIT : mm

| NOM. SIZE | | Sch 80 | | | | | | |
|-----------|---------------|--------|------|----------------|------|------|------|----------------|
| (A) | (B) | B | A | A ₁ | D | E | C | C ₁ |
| ① ② | ① ② | | | | | | | |
| 08 × 06 | 1/4 × 1/8 | 22.0 | 14.3 | 11.0 | 7.1 | 6.4 | 12.0 | 12.0 |
| 10 × 08 | 3/8 × 1/4 | 28.0 | 17.8 | 14.3 | 9.4 | 6.4 | 13.0 | 13.0 |
| 15 × 08 | 1/2 × 1/4 | 32.0 | 22.2 | 14.3 | 9.4 | 9.5 | 13.0 | 13.0 |
| 15 × 10 | 1/2 × 3/8 | 32.0 | 22.2 | 17.8 | 12.7 | 9.5 | 13.0 | 13.0 |
| 20 × 08 | 3/4 × 1/4 | 38.0 | 27.7 | 14.3 | 9.4 | 9.5 | 16.0 | 16.0 |
| 20 × 10 | 3/4 × 3/8 | 38.0 | 27.7 | 17.8 | 12.7 | 9.5 | 16.0 | 16.0 |
| 20 × 15 | 3/4 × 1/2 | 38.0 | 27.7 | 22.2 | 16.1 | 9.5 | 16.0 | 16.0 |
| 25 × 10 | 1 × 3/8 | 46.0 | 34.5 | 17.8 | 12.7 | 12.7 | 17.0 | 17.0 |
| 25 × 15 | 1 × 1/2 | 46.0 | 34.5 | 22.2 | 16.1 | 12.7 | 17.0 | 17.0 |
| 25 × 20 | 1 × 3/4 | 46.0 | 34.5 | 27.7 | 21.4 | 12.7 | 17.0 | 17.0 |
| 32 × 15 | 1-1/4 × 1/2 | 58.0 | 43.2 | 22.2 | 16.1 | 12.7 | 18.0 | 18.0 |
| 32 × 20 | 1-1/4 × 3/4 | 58.0 | 43.2 | 27.7 | 21.4 | 12.7 | 18.0 | 18.0 |
| 32 × 25 | 1-1/4 × 1 | 58.0 | 43.2 | 34.5 | 27.2 | 12.7 | 18.0 | 18.0 |
| 40 × 15 | 1-1/2 × 1/2 | 63.0 | 49.1 | 22.2 | 16.1 | 12.7 | 20.0 | 20.0 |
| 40 × 20 | 1-1/2 × 3/4 | 63.0 | 49.1 | 27.7 | 21.4 | 12.7 | 20.0 | 20.0 |
| 40 × 25 | 1-1/2 × 1 | 63.0 | 49.1 | 34.5 | 27.2 | 12.7 | 20.0 | 20.0 |
| 40 × 32 | 1-1/2 × 1-1/4 | 63.0 | 49.1 | 43.2 | 35.5 | 12.7 | 20.0 | 20.0 |
| 50 × 15 | 2 × 1/2 | 76.0 | 61.1 | 22.2 | 16.1 | 19.1 | 23.0 | 23.0 |
| 50 × 20 | 2 × 3/4 | 76.0 | 61.1 | 27.7 | 21.4 | 19.1 | 23.0 | 23.0 |
| 50 × 25 | 2 × 1 | 76.0 | 61.1 | 34.5 | 27.2 | 19.1 | 23.0 | 23.0 |
| 50 × 32 | 2 × 1-1/4 | 76.0 | 61.1 | 43.2 | 35.5 | 19.1 | 23.0 | 23.0 |
| 50 × 40 | 2 × 1-1/2 | 76.0 | 61.1 | 49.1 | 41.2 | 19.1 | 23.0 | 23.0 |

特記：異径カップリング(レジュューサー)-Eは大径側に等しく、
Dは小径側、A、C、は各々のサイズに対応する。

REMARK: RED. COUPLING (REDUCER) - E IS EQUAL TO LARGER SIZE,
D IS EQUAL TO SMALLER SIZE AND A, C, IS CORRESPONDING
TO EACH IN PRINCIPLE.

ヤマト特殊鋼株式会社

YAMATO SPECIAL STEEL CO., LTD.

Sheet No. JW-8

平成22年1月5更新